

About the Tokiwaso Street Showa Retro Museum

(Toshima Showa Museum of History and Culture)

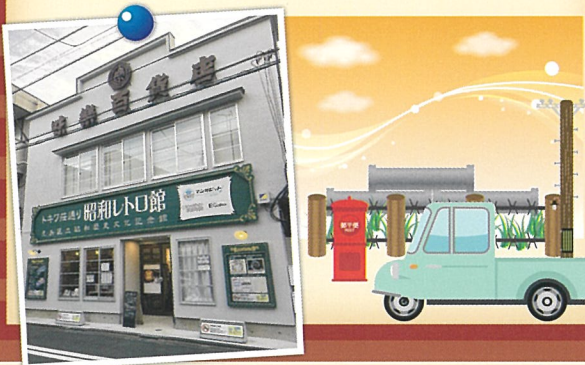
The former “Miraku Department Store” building was transformed into the Tokiwaso Street Showa Retro Museum (Toshima Showa Museum of History and Culture). This museum aims to preserve Showa Era history and culture and introduce it to future generations. It also seeks to develop local culture and keep the community vibrant.

The museum holds various Showa-themed events to pass on the history and culture of the era, including exhibitions that let visitors experience Showa life as well as diorama exhibits that re-create Toshima townscapes during the Showa days.

About “Miraku Department Store”

“Miraku Department Store” was a “postwar market” on Tokiwaso Street built after World War II. Postwar markets were low-rise commercial facilities consisting of several stores that appeared during the reconstruction period. While many postwar market buildings have been lost, the “Miraku Department Store” building retains much of its original appearance, making it a valuable historical structure.

“Miraku Department Store” was renovated to house the Tokiwaso Street Showa Retro Museum.



User Guide

Museum Hours: 10:00–18:00
(Last Admission 17:30)

Closed: Mondays

(if Monday is a national holiday, the Museum will be open and closed the following day), year-end / New Year’s holidays, and exhibition changeover periods

Admission fees: Free

(but a fee is required to enter the Manga Pit)

Access Map



Address: 3-4-10 Minami-Nagasaki, Toshima City, Tokyo, 171-0052, Japan

【Access】

- <By train> 13 minutes’ walk from Shiinamachi Station or Higashi-Nagasaki Station on the Seibu Ikebukuro Line.
8 minutes’ walk from Ochiai-Minami-Nagasaki Station on the Toei Oedo Line.
- <By bus> 3 minutes’ walk from Minami-Nagasaki 2-Chome bus stop on the Toei bus (Ike[池] 65, Shiro [白] 61, Ren [練] 68), Kokusai Kogyo bus, Kanto bus (Ike [池] 11)

1. The museum does not have a parking lot for cars, motorbikes and bicycles. (Please use the bicycle parking lot at Tokiwaso Manga Museum for bicycles.)
2. Please be considerate of other visitors and neighborhood residents when taking photographs or videos.

Inquiries

Tokiwaso Street
Showa Retro Museum
(Toshima Showa Museum of History and Culture)

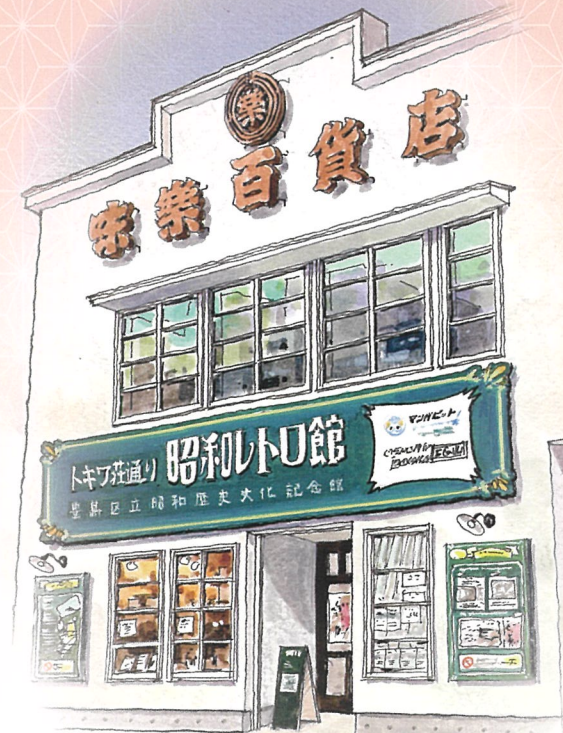
TEL: 03-3565-6991 FAX: 03-3565-0061



Published Nov.1, 2023

Tokiwaso Street Showa Retro Museum

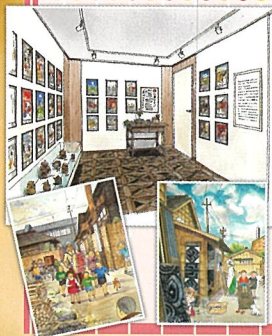
Toshima Showa Museum of History and Culture



Exhibition Room 1

Katsuaki Yajima

Showa Lifestyle Gallery

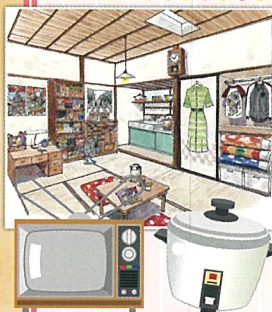


This exhibition features original paintings and other collections by local historian Katsuaki Yajima (1929–2023). Yajima's paintings have a gentle style and depict Showa life in the 1930s to 1950s, as experienced by Yajima himself.

Exhibition Room 2

Showa Life

Daily life around 1965



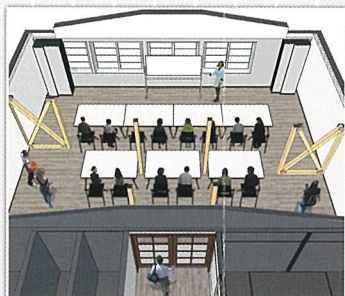
This exhibition re-creates life in a typical six-tatami room of the era. Visitors can see how people lived in those days when the use of home appliances such as black-and-white TVs, vacuum tube radios and electric rice cookers became common.

Multipurpose Room 1+2

Reservations available!

This room can be reserved for events that preserve and introduce Showa Era history and culture for future generations, and to develop local culture and keep the community vibrant. This includes exhibitions, workshops, conferences and other events.

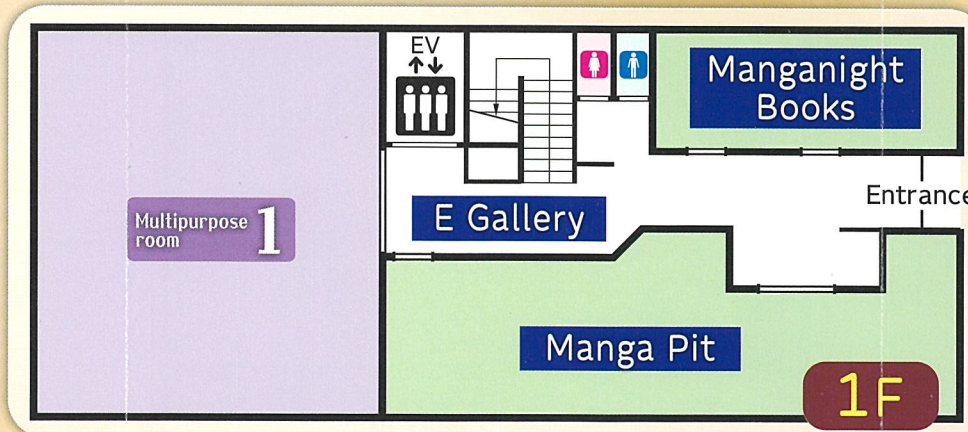
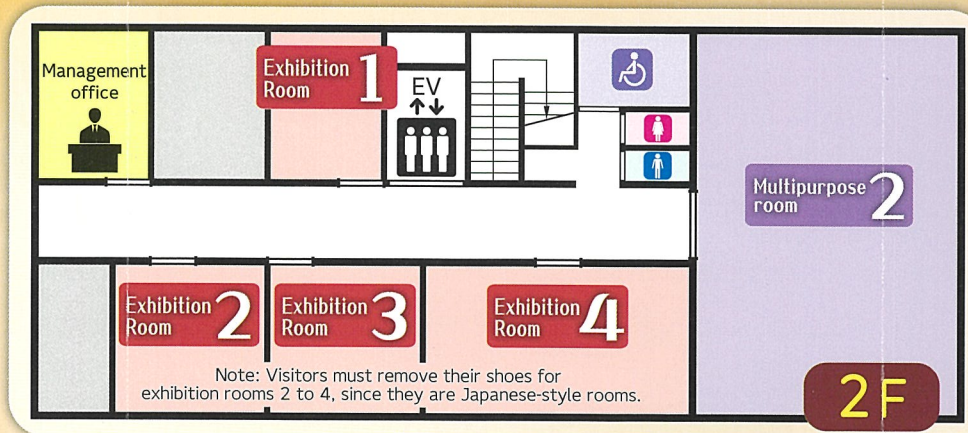
For usage guidelines and other information, please visit the city website.



To visitors

The city and community regularly holds exhibitions and events here. For more information, please visit the city website.

A museum full of Showa vibes!



Exhibition Room 3

Nostalgic Shades of Showa

Jinsei Yokocho and Scenes of the Kanda River Area



Created by artist Takaki Yamamoto, these dioramas re-create scenes of Jinsei Yokocho, an area around the east exit of Ikebukuro Station. They also offer an artist's impression of the area around the Kanda River, which flows along the border between Toshima City and Shinjuku City.

Exhibition Room 4

Toshima during Japan's Economic Miracle

Dioramas of Showa Era Ikebukuro



Created by artist Takaki Yamamoto, these dioramas re-create scenes around the former Toshima City Office, Toshima Public Hall and former Toshima Civic Center; the Ikebukuro Station east exit area, and the Ikebukuro Station west exit area so that visitors can get a sense of the times during Japan's economic miracle.

Private Facilities Operated by Manganight

Manga Pit

This reading space has seven thousand educational manga for children and other manga that are useful for learning.

- Admission fee: General: ¥500; elementary and junior high school students: ¥250; preschool children: free
- Free admission every Tuesday

Hours: 13:15–18:30

(10:30–18:30 on Saturdays, Sundays and national holidays)

Closed: **Mondays** (or closed the next business day if Monday is a national holiday, the Museum will be open and closed the following day), year-end / New Year's holidays, and other temporary holidays due to exhibition changeover, etc.

Inquiries: Tel. 070-5560-4965 (Manganight)

Manganight Books

Manga specialty bookstore

- Admission fee: Free

E Gallery

Manga specialty exhibition gallery

- Admission fee: Free