



KOMIMARO

came to Toshima-ku!

Garbage disposal

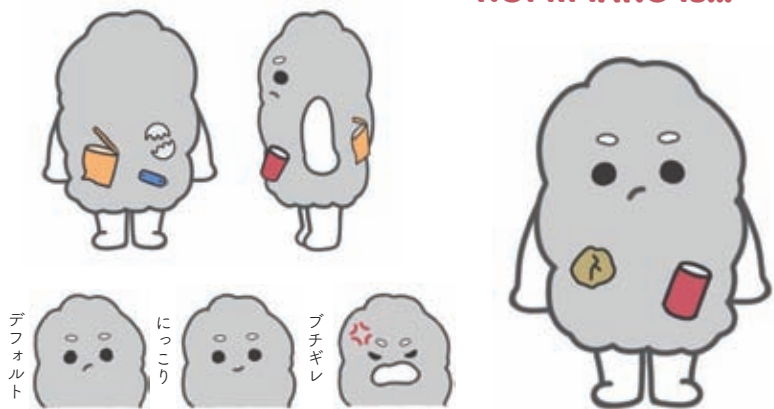


Komimaro IN TOSHIMA

Table of Contents

Do you know? Time to dispose of garbage	2
Let's sort it out !!	4
Watch out for warning stickers	5
How to dispose of large garbage?	8
Can't they be collected as oversize garbage?	10
There are certain places where you can dispose of garbage, let's follow the rules!	12

KOMIMARO is...



KOMIMARO lives alone in the town of KOMIMARO, Toshima-ku, Tokyo.
 KOMIMARO's body is made of garbage. In fact, the more garbage is added to his body, the worse his character becomes. One day, his body became heavy with garbage, and when he removed it, it became lighter and lighter, and his character became kinder! Since then, KOMIMARO has become more organized and started learning how to dispose of garbage.

Let's find mistakes!



The wrong way to dispose of garbage



ANSWER

Sort and dispose of garbage separately.



If a net is available, dispose of garbage under the net. Crows and rats scatter garbage. The collection point becomes dirty.

Garbage is scattered on the street and is unsanitary.

The act of taking away recyclable garbage is prohibited.

Do you know? Time to dispose of garbage



What you should know about garbage disposal

1 Check the garbage collection points!



Check the collection points available to you. Be sure to check with your landlord or real estate agent!

2 Check the garbage collection days!

~Garbage should be at the collection point by 8:00 a.m. on the collection day.(7:30 a.m. in the downtown area of Ikebukuro Station)

Collection days for recyclable and other garbage differ depending on the area you live in.

Please keep your garbage at home until the morning of the collection day.



With the notification function of the garbage sorting application "さんあーる", you won't forget the time and day of garbage collection!



「さんあーる」

App Store

Google Play



check!

Items not collected by the ward

Used injection needles
Toxic, hazardous, or flammable items
Items that emit a bad odor
Business-related garbage, etc.

3 Check the separation of garbage and recyclable garbage!

Garbage

Burnable Garbage



Metal, Ceramic, and Glass Garbage



Cardboard, Paper, Cloth



Plastics



Bottles, cans, PET bottles

Recyclable garbage

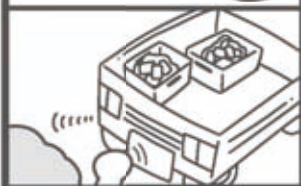
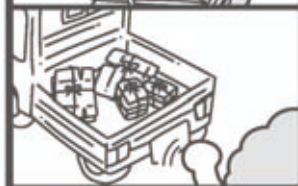
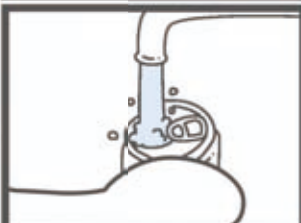
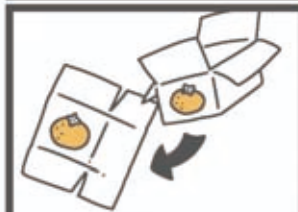
Let's sort it out!!



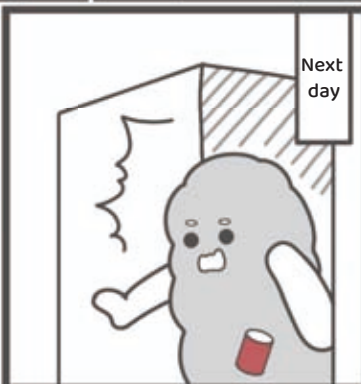
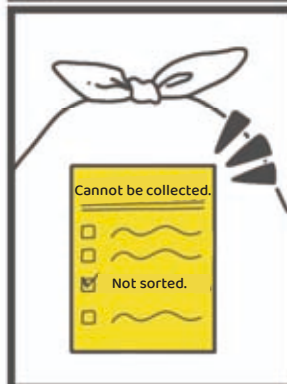
Cardboard, paper

PET bottles

Cans



Watch out for warning stickers



Let's learn more about garbage separation



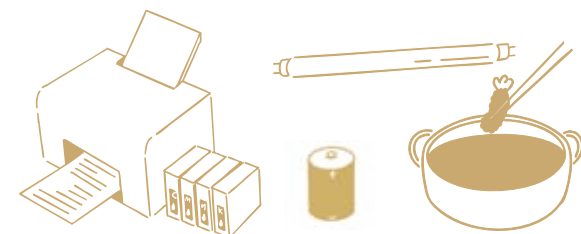
Let's learn more about recyclable garbage

Recyclable garbage is garbage that can be reused or recycled. For example, bottles, cans, PET bottles, cardboard, and other items made of paper, clothing and plastic. Dirt should be removed before disposing of them.



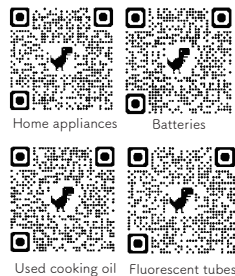
Some items are collected at ward facilities!

check!



Small home appliances, batteries, used cooking oil, ink cartridges, fluorescent tubes

Check here if you want to know more!



Points on how to dispose of garbage and recyclable garbage



Be punctual!
Dispose of garbage by 8:00 a.m.



Separate garbage and put it in a bag with the contents visible.



The standard amount of garbage that can be put out at one time is 3 bags (45L).



If you need to put out a large amount of garbage at one time, please contact the Toshima Garbage Disposal Office. (There is a charge for this service.)

If you do not follow the garbage disposal rules...

A warning sticker

sample



with the reason why it cannot be collected will be placed on the garbage bag! Garbage with that sticker will not be collected and will remain at the collection point. Please put it back out correctly on your next garbage collection day.

In particular, how to dispose of recyclable garbage...



check!



If the contents are still inside or dirty, wash them clean!



Put old books and paper together in cross-bindings or in paper bags!



How to dispose of large garbage?



What should I do with large garbage?

● Oversize Garbage

Purchase a
“Toshima Ward
fee-based bulky
waste disposal
ticket” at a
convenience store.

STEP
2



Furniture and household items that exceed 30 cm on a side are considered oversize garbage. Even if they are disassembled or cut into pieces smaller than 30 cm, they are still considered oversize t garbage.



STEP
1

Apply to the Bulky Waste Reception Center

STEP
3



Put the disposal ticket on the garbage and put it out by 8:00 a.m. on the garbage collection day at the designated place you indicated when you applied for the service.

● For recycling



Televisions



Air conditioners



Personal Computers(Laptop)



Refrigerators



Washing machines

For pickup of items subject to home appliance recycling, please contact the retailer where you purchased or are replacing the item directly. If you are unsure, please contact KADEN (home appliances) Recycling Reception Center.

KADEN
(home appliances)
Recycling Reception Center
0570-087200

Free collection
by the ward's
cooperating and
collaborating
businesses

PCs 3R
Promotion Association
03-5282-7685

Open the site from this QR code
to learn more!



About Bulky Garbage

check!
About home appliances
(TVs, PCs,
washing machines)



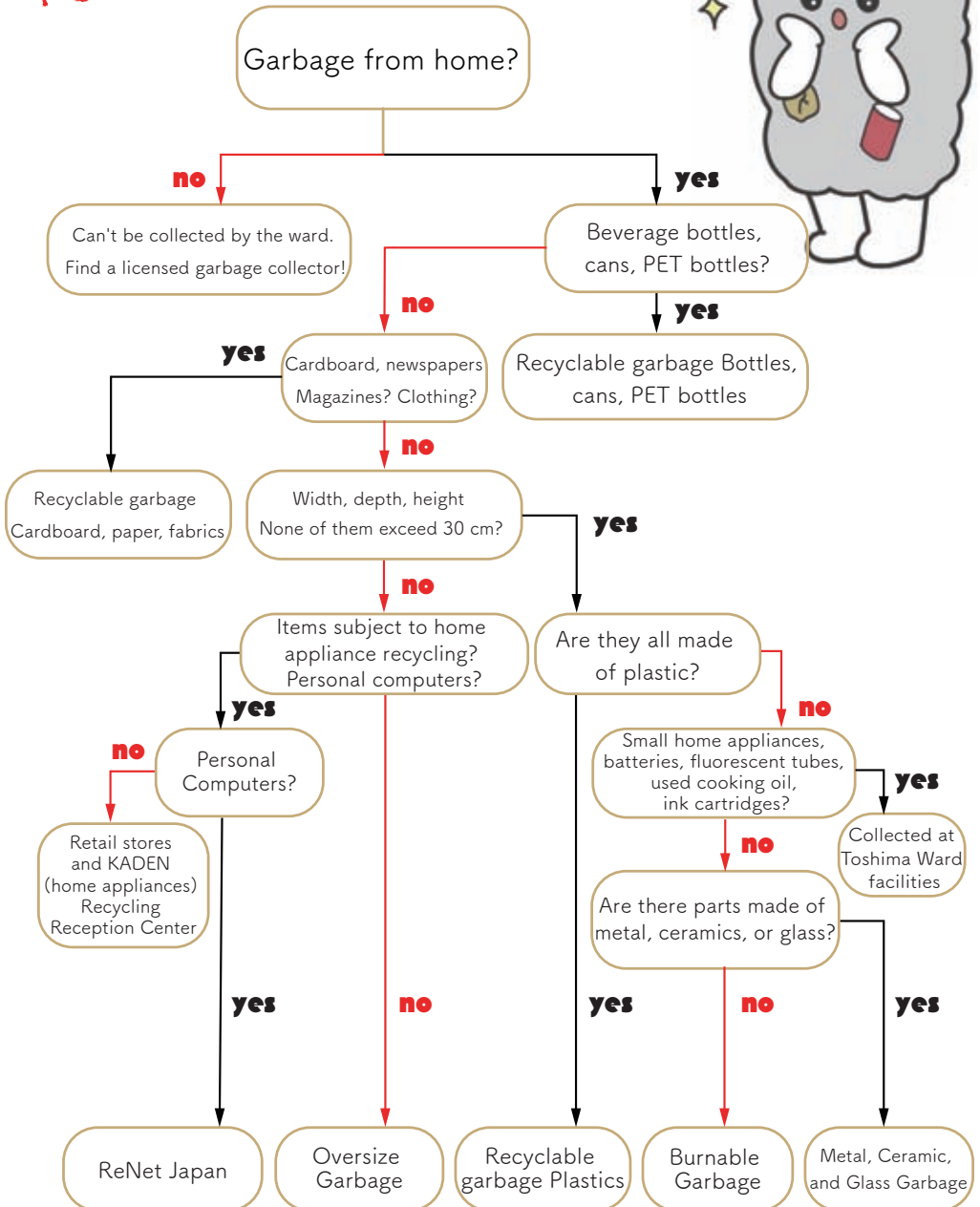
About PCs

Can't be collected as bulky waste?



No more confusing garbage sorting!

Flowchart



There are certain places where you can dispose of your garbage, follow the rules!



Toshima Ward Resource and
Garbage Separation Application“さんあ〜る”[®]

is now available!



**Don't know how to separate and
dispose of garbage?
The application solves such problems!**



● A wide variety of contents to support you ●

Garbage
Disposal
Calendar
Function

You can see the
collection date
at a glance on
the calendar
for your area.

Garbage
Separation
Dictionary

You can look up
sorting categories
and precautions
by item.

Useful
Booklet

You can find
detailed
information on
how to separate
and dispose of
garbage and
recyclable
garbage.

Frequently
Asked
Questions

Frequently asked
questions are
explained in detail
in a Q&A format.

Eat-all-you-can-eat
cooperative
restaurant

This section lists
restaurants that
are making
efforts to reduce
leftovers, such as
by introducing
small portions.

Alert
Notification

You can set alerts
for garbage
disposal dates
from the settings.

Production

SOKEI Art Academy (in no particular order)

戴 恬 editing/design/illustration

久保田 三矢羽 manga/illustration

白石 胡桃 manga/illustration

近藤 可奈 animation

石垣 杏 animation

田中 北斗 coordination

Published by

Planning Division, Policy Management Department,
Toshima Ward (Multicultural Conviviality Promotion Group)

☎ 03-3981-1782

Waste Reduction Promotion Division, Environment
and Cleaning Department, Toshima Ward
(Business Promotion Group)

☎ 03-3981-1142

Cooperation by

Kagawa Institute Meros Language School



**You are so nice that you separate garbage properly
and throw it away following the rules!**