

Toshima City

Basic Concept and Basic Plan Mini Book

Basic Concept [2025-2034]

Basic Plan [2025-2029]

Toshima City

Basic Concept and Basic Plan Mini Book

Basic Concept [2025-2034] / Basic Plan [2025-2029]

Editing and Publication

March 2025

Planning Section, Toshima City Policy Management Department

2-45-1 Minami-Ikebukuro, Toshima City, Tokyo 171-8422

Phone: 03-3981-1111 (main line)



この印刷物は、印刷用の紙へ
リサイクルできます。



MESSAGE from the Mayor

People Take the Lead:

Shaping Toshima's Future Together

Toward a City of Smiles,

Encounters, and Dreams



Miyuki Takagiwa,
Mayor of Toshima City

The Toshima City Basic Concept is the top-level principle for our municipal government. Inheriting the spirit of past concepts, it is a mid- to long-term compass for community-building that looks ahead to the future environment surrounding Toshima City while responding precisely to changes in society and residents' needs.

The core values and direction of urban development set out in this Basic Concept serve as a shared guide for everyone involved with Toshima City, paving the way for a new era as a sustainable city and ensuring future growth.

That is why we placed utmost importance on working together with our residents, exchanging ideas and opinions, and envisioning the future of Toshima in a way that fully brings out its unique character.

The Basic Concept and Basic Plan reflect the opinions of people across generations, from youth to seniors, as well as from businesses, organizations, and universities. Based on these, we will continue moving forward together toward a "dream city"—a place our residents feel proud to call home and want to live in for years to come, and a place that inspires admiration and draws in visitors from outside.

CONTENTS

Basic Approach to the Plan P03

The Three Core Values

Everyone Has a Role to Play P05

A Community Where All Are Connected P07

A City of Smiles, Encounters, and Dreams P09

Direction of Urban Development

A City of Safety, Security, and Community Support P11

A City That Supports Parenting and Nurtures the Individuality of Children and Youth ... P15

A City of Lifelong Health and Inclusive Welfare P19

A City of Diverse Culture That Fosters a Rich Spirit and Active Interaction ... P23

A City of Thriving Industry and Tourism P25

A City That Is Built Together—Kind to Both People and the Planet P27

A City That Is Comfortable and Walkable for All P29

Toshima City Basic Data P31

Help Shape the Future of Toshima with Your Opinion P33

CHECK



Scan the above QR code to view
the full Basic Concept and Basic Plan,
glossary of terms,
and budget summary.

Positioning of the Plan

Toshima City has created a Basic Concept as its top-level principle outlining the future of the community, along with a Basic Plan to put that vision into action. These guide how the City is managed in a comprehensive and strategic way.

Basic Concept

The highest-level principle outlining the future vision Toshima City aims to create

Core values
Direction of urban development

Basic Plan

A plan that organizes the measures and goals necessary to achieve the future vision by category, and gives specific numerical targets

Local governance principles
Measures
Sustainable management of administrative and fiscal affairs

Implementation plan

A plan that turns the measures in the Basic Plan into concrete projects (updated every year, looking ahead three years at a time)

In March 2025, Toshima City updated both its Basic Concept and Basic Plan to reflect current social trends and changes in residents' needs.

Key Social Trends

Responding to a shrinking and aging population
The climate change crisis
Social changes after the COVID-19 pandemic
Respect for diversity
More frequent and severe large-scale natural disasters
Digital transformation

Plan periods

2025 R7	2026 R8	2027 R9	2028 R10	2029 R11	2030 R12	2031 R13	2032 R14	2033 R15	2034 R16
[Basic Concept] FY2025–FY2034 (10 years)									
[Basic Plan] FY2025–FY2029 (5 years)									

Toshima City's Vision for the Future

With the **Three Core Values** at the heart of the Basic Concept and the **Seven Directions** of Urban Development guiding each policy area, we are working together with residents to advance the urban development of Toshima from a community-first perspective.

We want today's residents to feel proud of where they live and to want to stay for the long term. At the same time, we aim to create a city that others admire—a place people dream of living in and are excited to visit.



Core value 1

Everyone Has a Role to Play

We will create a city where every voice is heard, where everyone can enjoy peace, and where diversity is recognized and respected, including gender, age, nationality, physical and mental condition, social and economic background, and differences in opinions and values. Our goal is for every resident to feel happiness and live in good health, in their own way, at every stage of life.

► Peace and Respect for Human Rights

- As we approach 80 years since the end of World War II, memories of the war are beginning to fade.
- Meanwhile, residents' values have further diversified as a result of the COVID-19 pandemic.

- We aim to build a city where peace and human rights are respected, and where every resident can feel happiness and live in their own way, even in these rapidly changing times.
- Our goal is a society where people recognize and respect differences in gender, age, nationality, physical and mental condition, and more.



► Realization of Gender Equality

- Japan ranks 118th out of 146 countries in the Gender Gap Index, highlighting ongoing gender inequality. Increasing understanding of diverse gender identities and sexual orientations also remains a challenge.
- A society where everyone, regardless of gender, etc., is respected and can live in safety and comfort is required.

- We apply the perspective of gender equality to all policy areas.
- We promote women's empowerment across all areas for participation.
- We support individuals facing challenges related to gender, etc.



► A Multicultural Community Where Foreign Residents Can Shine

- Foreign residents make up about 12% of Toshima City's population, representing roughly 130 countries and regions—a number that is expected to grow.
- It is necessary to provide support for daily life while recognizing differences and fostering equal relationships.

- We apply the perspective of multiculturalism to all policy areas.
- We improve multilingual information services and strengthen consultation systems in collaboration with relevant organizations.
- We encourage foreign residents to participate in neighborhood associations and other community groups, and support their involvement in local society.



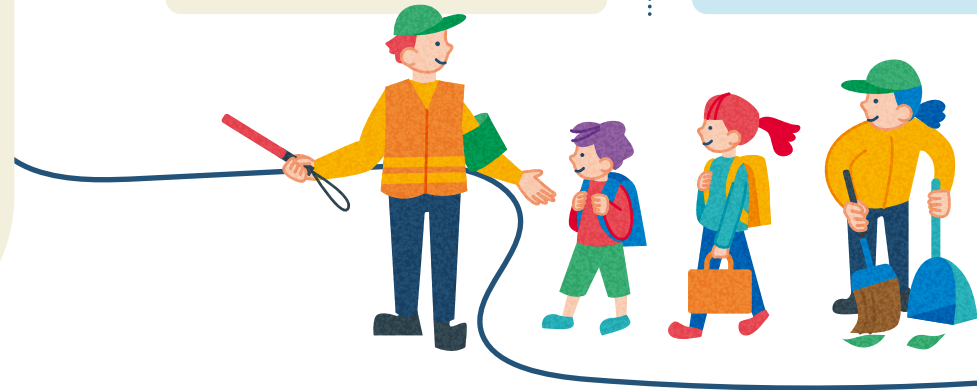
A Community Where All Are Connected

We will build a sustainable, co-creative community where no one is left behind and everyone contributes. By connecting people of all ages—from children to seniors—and working together to solve local issues, we will expand partnerships with community groups, businesses, other municipalities, and more, thereby creating positive cycles of community-driven growth.

Promoting Collaboration Among Diverse Partners

- As society changes rapidly and residents' needs diversify, it's difficult for local government to address every issue alone.

- We will work closely with a wide range of partners—including community groups, businesses, and other municipalities—each playing their part and cooperating as equals, to find solutions tailored to local challenges.



Promoting Participation and Sharing Information

- In order for the City and its residents to build the community together, two-way communication and the provision of services designed from the residents' perspective are necessary.

- We will ensure timely and easy-to-understand sharing of information about City administrative information.
- We will listen carefully to residents' opinions and strengthen systems to actively reflect their input in City administration.



Building a Sustainable Society Through Co-Creation

- Innovative, urban development led by private sector initiatives like Team Toshima*¹ and the Ikebukuro Area Platform*² is expected to boost the value and appeal of the area.

- We aim to build a sustainable society where open communication and self-sustaining positive cycles emerge naturally, without being bound by existing organizations or frameworks.



*¹ A public-private-academic partnership that succeeded the local business-based committee for the Toshima City 90th anniversary project

*² A local, private-sector-led collaboration and coordination platform to develop and co-create the value of the Ikebukuro area

A City of Smiles,

In this dense and diverse urban setting, we will carry forward the rich culture and history shaped by those who came before us, while bringing out the unique character of each area to make Toshima even more attractive.

This vision is based on ideas shared by residents through the Toshima Children's Council and city community workshops.

Encounters, and Dreams

In a safe, secure, lively, and comfortable urban environment, the entire community will help raise the children who will shape our future. Through this, we will continue to grow as a “city of dreams” —a place people want to live, keep living, and come to visit —filled with new encounters and smiles.

The word “encounters” reflects Toshima’s high population mobility and its blend of old and new cultures, while “smiles” expresses the vision of happy and healthy people and neighborhoods.

► Passing On Local Culture and History

We will preserve and pass down the local culture and history, while continuing to welcome diverse people and cultures. At the same time, we will adapt flexibly to changing times and keep moving forward.



► Utilization of Local Characteristics and Resources

We will develop policies that bring out the full potential of Toshima City's unique character. By turning strengths into even greater assets and transforming challenges into new opportunities, we aim to create a city of dreams filled with smiles.



1

A City of Safety, Security, and Community Support



To enable residents to live with peace of mind in their communities, we will work together with local neighborhoods to create a safe and secure city. This includes revitalizing local communities and addressing issues such as disasters, public safety, and the living environment through both physical infrastructure and community-based measures.

Disaster prevention and mitigation, and health risk management

Protecting Residents from All Types of Crises

The risks of heatwaves, heavy rain, earthquakes, infectious diseases and other severe and complex emergencies are on the rise.

Toshima City will work together with relevant organizations to build a strong and effective response system that protects the lives, health, and property of all residents. We will conduct practical drills tailored to each type of crisis and ensure that accurate information is shared quickly when emergencies occur, helping residents to take appropriate action.



Raising Disaster Awareness to Allow Residents to Feel Safe at Home or in Shelters

In the event of a disaster, it is even more important for people to protect themselves, help one another, and provide support that respects diversity.

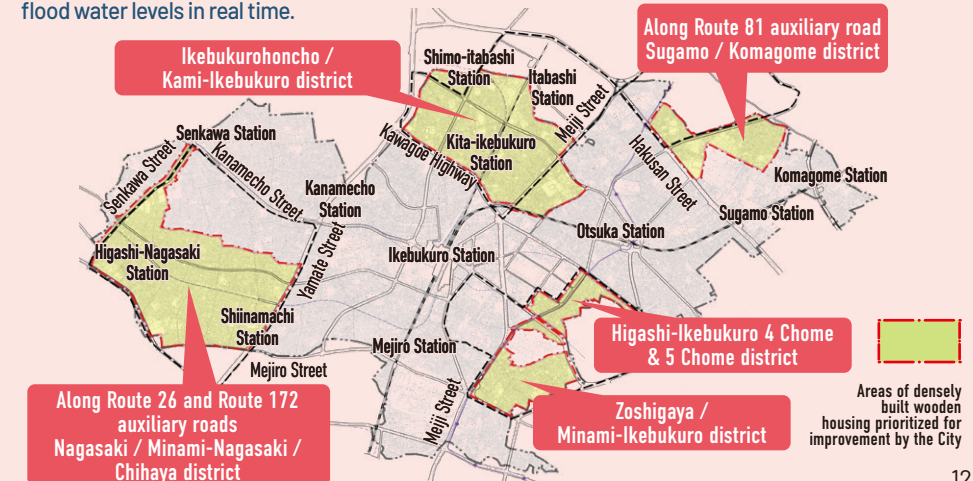
We will raise awareness about emergency supplies and evacuation procedures, and conduct shelter management drills in partnership with the local community. We will also build evacuation systems for people who need support, such as seniors and people with disabilities, while creating shelter environments that consider the needs of women, foreign residents, and others from diverse backgrounds.



Building Disaster-Resilient Community Infrastructure

Along with burying power lines and making buildings more fire- and earthquake-resistant, we will develop firebreak zones in densely built wooden housing areas, in coordination with the construction of city-planned roads. We will also promote the development of roads and parks in these areas. To prevent urban flooding, we will also install permeable paving and establish systems to monitor flood water levels in real time.

Many of Toshima City's streets are narrow, and about 40% of the area consists of densely packed wooden houses, making it vulnerable to disasters. In recent years, the City has also experienced damage from intense, localized downpours.



Local community

Participation of a Diverse Range of Residents in Local Activities

As the birth rate declines, the population ages, and community ties weaken, the shortage of people to lead neighborhood associations and community activities, and issues concerning multicultural coexistence are becoming more apparent.

We will encourage participation in neighborhood associations and community activities by working-age residents and foreign nationals through digitalization of operations, hosting events, enhancing information outreach, and other measures. We will also strengthen collaboration between local groups and companies, universities, or other organizations eager to contribute to the community, to further vitalize local activities.

Revitalizing Community Interaction: The New Civic Plazas

There are 26 civic plazas across Toshima City, but currently, they see limited use by children, youth, and working-age residents. As hubs for the local community, their operations need to be rethought.

We will rebuild these civic plazas into welcoming spaces for all by tailoring their management to local characteristics and offering programs that reflect diverse needs—such as community cafés and other inclusive activities—to encourage broader participation.

Living environment

Living with Peace of Mind in Familiar Neighborhoods



While the number of households with children is growing, challenges remain in improving the settlement rate and securing housing for those who need extra support, such as seniors, people with disabilities, and single-parent households.

We will promote a better living environment for all generations and household types by making use of private housing, vacant homes, and various support programs for long-term residency.

From moving-in to daily life thereafter, we will strengthen support systems for those in need through coordination with relevant organizations.

Public safety

Protecting Residents from All Types of Crime



While crime in Toshima City is generally declining—even in entertainment districts—fraud targeting seniors and other crimes remain a concern.

We will raise awareness, conduct patrols, and take other measures in cooperation with the police to protect residents from crimes such as telephone fraud, dangerous drugs, and sexual violence. We will also strengthen community safety by supporting neighborhood patrols and installing security cameras throughout the City.

2

A City That Supports Parenting and Nurtures the Individuality of Children and Youth



Through continuous, compassionate support, we will create an environment where families can feel secure in having and raising children. At the same time, we will build a community where the rights of children and young people are respected, where they can learn with hope for the future, grow in their own way, and live happily.

Childcare support

A Safe and Supportive Environment for Raising Children

As nuclear families become more common, many parents have less access to support, leading to greater feelings of loneliness and isolation.

We will identify risks and concerns at an early stage, and provide continuous support starting from pregnancy through prenatal interviews, postpartum care, and support for fathers.

We will build systems that enable parents to seek advice within their communities and enhance care for children with special needs and the overall quality of childcare. We will also improve the convenience of childcare services by simplifying procedures and sharing information through digital technology.



Enabling Families Facing Challenges to Find Joy in Raising Children

Consultations from families about their children's growth and development are on the rise. In addition, the challenges parents face—such as financial hardship or single parenting—are becoming increasingly diverse.

Through home visits and similar outreach, we will identify families in need at an early stage and connect them to appropriate support. We will strengthen support systems that span healthcare, welfare, education and other sectors to assist families raising children who require medical care or have developmental disabilities. We will also provide close-following support tailored to each household's living conditions and financial situation, helping families move toward greater independence.



Education

Raising Healthy, Energetic Children with Strong Academic Skills

Children need continuous education from early childhood, tailored to their individual needs. The restrictions of the COVID-19 pandemic have caused many children to experience a decline in physical fitness and difficulties with communication.

We will establish an Early Childhood Education Center as a hub for providing high-quality early education that serves as the foundation for character development.

In schools, we will make effective use of ICT equipment to offer engaging, high-quality lessons that foster active, interactive, and deep learning. We will also encourage healthy development of both mind and body by promoting activities that raise health awareness and creating a variety of experiences in collaboration with local human resources.



Attendance at School with Peace of Mind

Children who are not attending school, have disabilities, or come from foreign backgrounds need multifaceted and individualized support.

We will work to prevent absenteeism and bullying before they occur, while strengthening access to counseling from psychologists and offering learning and family support. Through coordination between educational organization and specialist health and welfare consultation services, we will provide support tailored to each child's stage of development and Japanese language ability.



High-Quality Learning Environments That Meet Today's Needs

About 30% of public elementary and junior high school buildings in Toshima City are over 60 years old, highlighting the need to improve the learning environment for children.

We will carry out planned reconstruction projects to ensure high-quality educational environments, while also developing these facilities as hubs for community activities. Depending on the state of deterioration, we will make necessary renovations to improve safety, enhance the learning environment, and raise educational quality.

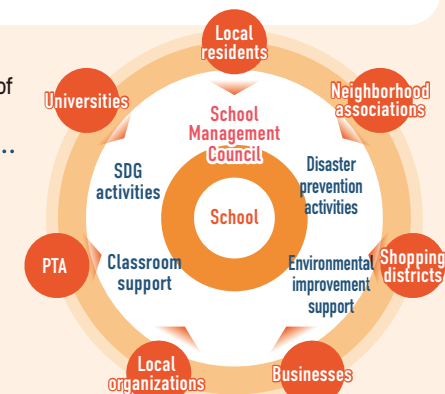


〈 Illustration of a learning and information center 〉

A Community That Watches Over and Nurtures Its Children

As challenges that cannot be solved by schools alone continue to grow, there is a need for systems that leverage the strength of the community to support child development.

We will expand the "Community School" model to all schools, fostering school management that brings together families and the local community. By creating more opportunities within the community for children to develop social skills through real-world experiences, we will nurture future community leaders who feel a strong connection to Toshima City.



〈 The Toshima City Community School system 〉

Support and social care for children and youth

More Opportunities for Children's Voices to Be Heard and Their Independence Respected

Children have the right to express their views and freely participate in activities that interest them. It is necessary for society as a whole to respect them as individuals and consider what is truly in their best interests.

We will raise public awareness about children's rights and strengthen consultation services to detect and address rights violations at an early stage.

We will create an environment where children can express their thoughts and share their ideas, and support their active involvement by incorporating their voices into school management and City governance.



Spaces Where Children and Youth Can Be Themselves

With more dual-income households and the social effects of the COVID-19 pandemic, there is growing concern about children spending time alone and young people struggling with social isolation.

We will expand places like Kodomo Skip that offer safe spaces for children, and work with youth support organizations to create new, welcoming spaces where children and young people can spend time comfortably.



Children and Youth Living with Dreams and Hope

The number of children and young people in need of support—such as young caregivers and care leavers—is on the rise, along with cases of child abuse.

We will raise awareness of the various consultation services available, making it easier for children and young people to seek help, and connect them to early support through coordination between relevant organizations, support groups, and local residents. In addition to promoting awareness to prevent child abuse, we will use the legal authority of child consultation centers to protect the best interests of every child.



Child-friendly consultation and awareness characters that make it easier for children to share their worries

3

A City of Lifelong Health and Inclusive Welfare



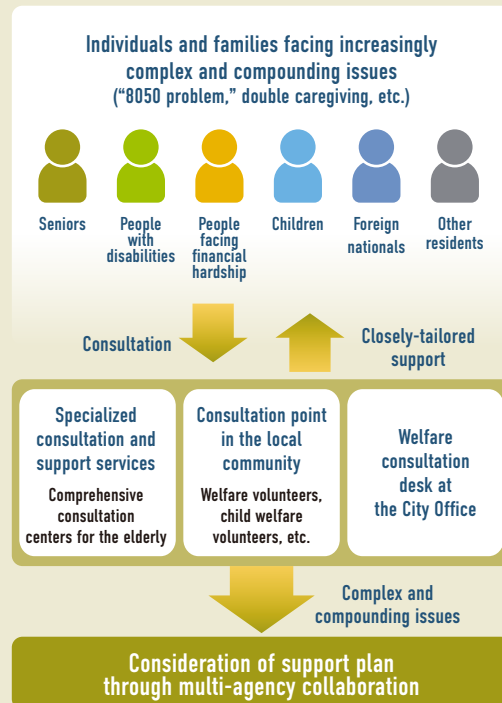
We will promote community development that supports each person's connection to society and ability to live independently as they wish, while helping everyone maintain their mental and physical health, age in their own way, and continue living actively in familiar neighborhoods.

Welfare

Connecting Residents with Complex Challenges to Appropriate Support

Flexible responses that go beyond traditional systems and organizational boundaries are essential to support residents facing increasingly complex and compounding issues, such as the "8050 problem" or double caregiving.

All consultation desks will take a comprehensive approach, listening to any kind of concern and quickly connecting people to the appropriate support. For individuals and families with problems that cannot be solved through a single service, agencies in welfare, healthcare, education, and other fields will work together to provide coordinated, multi-faceted support.



〈 The consultation and support system 〉

Seniors and People with Disabilities Living Healthy, Fulfilling Lives

As the population ages, it is increasingly important to promote healthy living and address declining decision-making ability due to conditions like dementia. People with disabilities may also face difficulties in going out or participating in community activities.

We will promote frailty prevention and other preventative programs for older adults. By supporting the wishes of the individual and encouraging the use of adult guardianship systems, we will work to protect the rights of seniors in daily life.

We will create a more accessible environment through barrier-free design, and expand opportunities for people with disabilities to participate in sports, cultural activities, and the community.



Spaces and Support That Help People Feel Connected

Since the COVID-19 pandemic, issues such as loneliness, isolation, and challenges faced by people in financial hardship—many of which fall outside the scope of existing welfare systems—have become apparent.

Across policy areas such as welfare and childcare support, we will create places that foster human connection and promote local initiatives that strengthen community ties. To provide early access to support, we will train local residents to take active roles in mutual support activities such as community monitoring efforts, while also building cross-sector networks that connect support providers in different fields.



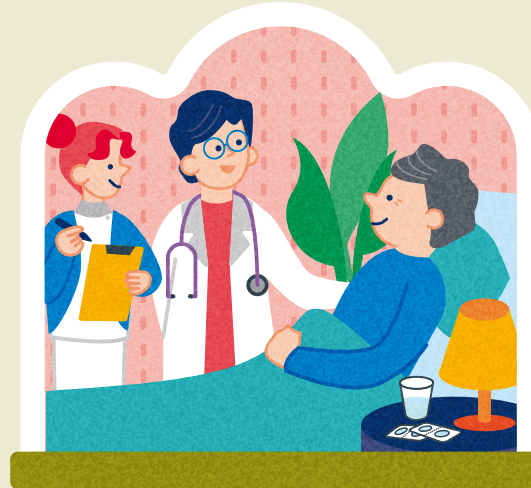
Quality Care Through Stable Welfare Services



As the working population declines and more people leave the workforce, a shortage of welfare personnel is occurring. At the same time, consultations and reports related to inappropriate care and abuse are increasing.

To secure and retain welfare personnel, we will communicate the appeal of working in care settings and reduce workload through the use of ICT and other efficiency measures. We will also prevent inappropriate care and abuse by providing training and guidance to service providers. In addition, we will expand consultation and learning opportunities to support residents who care for family members at home.

Receipt of Medical and Welfare Services Close to Home



As the baby boomer generation reaches 75 and older from 2025 onward, the number of residents needing both medical care and long-term support is expected to increase.

We will ensure a system that provides seamless access to care by coordinating across regional medical and welfare institutions and professions. To help residents receive treatment with peace of mind at home, we will secure local doctors to provide home care and improve information sharing among professionals through the use of ICT.

Health

Everyone Takes Action Toward Better Health



Health issues vary by age and gender, and since the COVID-19 pandemic, more people are experiencing mental health challenges such as depression.

We will encourage residents to get regular health checkups, share health-related information to raise awareness, and expand opportunities for health consultations and education, in order to detect illnesses early and help people improve their daily habits. We will also disseminate accurate knowledge about mental health, establish systems that make it easier for people to detect issues at an early stage and seek help, and promote measures to prevent depression and suicide.

Preparation Against All Infectious Diseases and Emergency Medical Situations



Since the COVID-19 pandemic, various infectious diseases have continued to spread, making daily preparedness and disease-specific prevention critical.

In the event of a disaster such as an earthquake, it is essential to deliver medical aid efficiently and treat the injured quickly.

We will prevent the spread of infectious diseases through accurate information sharing and promotion of vaccinations. We will also continue disaster medical response drills and strengthen cooperation with local medical institutions to build a more robust emergency medical system.



A City of Diverse Culture That Fosters a Rich Spirit and Active Interaction

We will preserve and pass down the local history and culture while continuing to embrace new cultural influences. At the same time, we will create an environment where everyone can feel and experience culture in their daily lives, and promote community development where arts and culture intersect, connecting Toshima with the world.



Arts and culture

A Place Where Everyone Can Enjoy a Rich Life Through Diverse Arts and Culture



Arts and culture spark creativity, foster emotional connections, and provide a foundation for mutual understanding and respect. They play a vital role in building a more vibrant and rich society.

We will expand opportunities for all residents—including children and people with disabilities—to experience, participate in, and enjoy culture. This will help deepen community connections through culture and broaden the cultural base across the City. By using digital technology and nurturing the next generation of leaders, we will pass down the diverse local culture built by those before us and continue to help it grow.

Lifelong learning

An Environment Where Everyone Can Learn in Their Own Way

With the spread of social networking and digital media, the ways people gather information, read, and learn have become more diverse. It is necessary to create learning environments that allow residents to study in ways that suit them best.

Our lifelong learning facilities will offer a wide range of programs and promote digital access, providing spaces where anyone can learn at any time. Libraries will serve not only as places for reading and study, but also as community hubs for gathering and interaction—centers of knowledge that support lifelong learning for residents.



〈 Illustration of the renovation of Kami-Ikebukuro Library (scheduled to reopen in June 2026) 〉

Sports

Residents Thriving Through Sports

Opportunities to engage in sports decreased during the COVID-19 pandemic, and children's physical fitness in particular is on the decline. There is a growing need to create environments where people can enjoy sports throughout their lives, regardless of age, gender, and disability.

We will expand opportunities for residents to participate in sports by encouraging use of public sports facilities, effectively utilizing school facilities and parks, and organizing events in collaboration with related organizations.

We will create opportunities for residents to enjoy sports in various ways, including meeting and interacting with athletes, trying out urban sports, and experiencing inclusive sports that are open to all.



5

A City of Thriving Industry and Tourism

We will promote business growth and transformation that foster startups with a global outlook, while supporting the sustainable development of the local economy. At the same time, we will create a vibrant city by leveraging local cultural assets such as manga and anime to attract visitors from both Japan and abroad.



Industry promotion and consumer affairs

New Companies Emerging to Drive Toshima's Local Industries

The business environment is becoming increasingly challenging due to shifts in work styles and consumer behavior brought on by the COVID-19 pandemic. At the same time, changes such as the lowering of the age of majority and advances in digitalization are reshaping the consumer landscape.

We will encourage the sustainable growth of small and medium-sized enterprises through professional consultation services and digital transformation support. We will also support entrepreneurs and startups employing diverse talent by offering seminars, networking events, and other opportunities. We will promote education and awareness-raising to prevent consumer problems.



A Lively, Thriving Shopping District at the Heart of the Community



Shopping districts are facing major changes, including labor shortages, lack of successors, and rapid digitalization. It is necessary to respond to these shifts while strengthening the management capabilities of individual businesses and building sustainable shopping districts.

We will offer business consultations, support sales promotion efforts, and encourage the use of cashless payment systems and multilingual services to help individual shops operate more stably. We will also attract new businesses to vacant storefronts, support events and product development in collaboration with universities and companies, and promote the unique charm of each shopping district.

Tourism promotion

A Local Economy Revitalized Through Diverse Tourism Attractions



Inbound tourism is recovering following the COVID-19 pandemic. To maintain this momentum, it is necessary to further promote Toshima City's appeal, while improving the environment to ensure visitors have a comfortable experience and can easily explore the area.

Working with local organizations and businesses, we will refine and promote a wide range of tourism assets—including manga, anime, and local festivals—and share them effectively both in Japan and overseas. We will also strengthen visitor support systems by enhancing multilingual services at tourist information centers, and take steps to manage crowding and address issues like poor visitor etiquette.

6

A City That Is Built Together—Kind to Both People and the Planet



Through collaboration among diverse partners, we will grow urban greenery, create a clean and beautiful city, and promote the transition to a decarbonized society. Together, we will build a community that preserves a healthy environment and passes it on to future generations.

Climate change and decarbonization

Everyone Taking Personal Responsibility for Action Toward Decarbonization

The impacts of climate change are becoming more severe each year, and accelerating our response is critical. To protect the future, it is essential to work with residents and businesses to promote environmentally friendly behavior.

To achieve net zero carbon emissions by 2050, we will encourage energy-saving practices and the introduction of renewable energy to reduce greenhouse gas emissions.

Through environmental education and awareness programs for children and others, as well as environmental events, we will inspire behavior change and expand community action for a sustainable future.



Peaceful and Refreshing Green Spaces Throughout the City

Greenery plays a vital role in shaping the urban environment and supporting biodiversity. In a densely built city, it is necessary to find creative ways to preserve and expand green spaces.

We will promote urban greening through both community-led efforts and large-scale developments. We will also offer hands-on programs to help residents connect with nature.



Recycling-oriented society

Effective Use of Resources Through the Practice of the 3Rs

A significant portion of waste generated in the City consists of reusable materials, and food waste also remains an issue.

We will promote advanced 3R efforts by encouraging waste reduction, proper sorting and disposal, and expanding the range of recyclable items.



Living environment

Clean, Comfortable Neighborhoods for Everyone

Issues such as smoking on the street and littering by visitors are affecting the comfort and safety of local communities.

We will provide designated smoking areas, promote good manners through multilingual outreach, and conduct local cleanup activities in partnership with members of the community.





A City That Is Comfortable and Walkable for All



We will create an attractive urban environment that we can be proud to pass on to the next generation. Centered around Ikebukuro Station, we will connect key spots across the City to make it easier for everyone to walk safely throughout the streets.

Urban regeneration, landscape, transportation, and roads

Safe, Comfortable Public Spaces Where People Come First

It is necessary to create a comfortable urban environment by making the most of key public facilities, such as the four parks around Ikebukuro Station and popular tourist attractions.

We will work in partnership with the community to create spaces with functions that enhance disaster prevention, comfort, social interaction, and vibrancy.

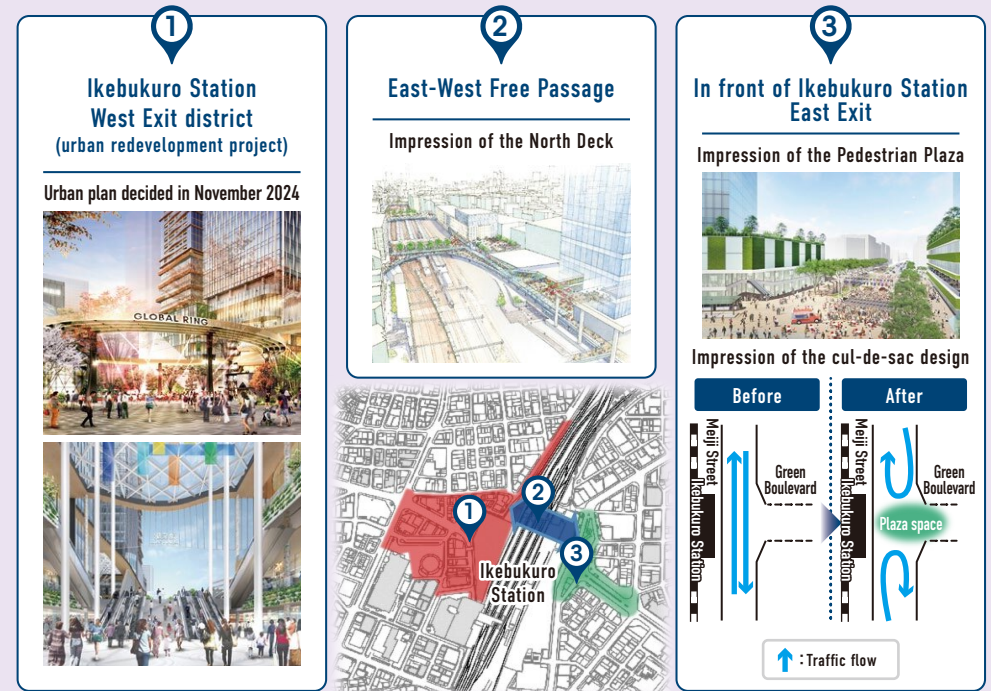
We will also develop unique, attractive neighborhoods that reflect the culture, history, and scenic character of each area, while providing an environment that enables everyone to move around safely and comfortably.

Energy and Vibrancy Centered Around Ikebukuro Station

Ikebukuro Station serves over 2 million people per day, but most use it just for transfers. To encourage people to explore the surrounding area, it is necessary to improve the station's connectivity with the city and enhance surrounding spaces.

Through private-sector urban redevelopment projects, we will promote the integration of various urban functions, strengthen pedestrian networks, and improve public spaces, transforming the area into a walkable, people-friendly environment. We will also enhance the city's appeal by creating comfortable urban spaces in the open areas around the station.

[Illustrations of the Ikebukuro Station Area Redevelopment]



Through-traffic is limited by turning one end of the road into a rotary-style turnaround

Parks

Parks as Places for Residents



Many parks in the City are small, some with limited space for children to play freely, and seeing little use. It is necessary to develop parks that reflect the needs of each community.

We will listen to residents of all ages and explore how parks can be used for relaxation, play, and social connection. Each park will be rebuilt to reflect the unique character of its local community. Together with the community, we will establish local rules, promote community-led maintenance and management, and encourage park use as a way to strengthen local vitalization.

Q Toshima City Basic Data

► Origin of the City Name

The establishment of Toshima City dates back to October 1932, when 82 towns and villages on the outskirts of Tokyo were merged into Tokyo-shi (city), resulting in the creation of 20 new wards. Four towns from the former Kita-Toshima County—Sugamo, Nishi-Sugamo, Nagasaki, and Takada—were consolidated. Following discussions among the four towns, “Toshima” was decided to be the name after consolidation in order to preserve the name of the Kita-Toshima County, which was being dissolved. The new name honored the area’s central role within the former county.

► Area and Population

Area **13.01km²**
(18th largest of Tokyo’s 23 special wards)

Population **294,644**
(including 36,360 foreign residents)

As of January 1, 2025

Distinctive Population Characteristics of Toshima City

- 1 The only one of Tokyo’s 23 special wards to have been identified as a city at risk of disappearing*¹
- 2 Highest population density in Japan (22,648 people/km²)*²
- 3 Highest proportion of seniors living alone in Japan*³
- 4 High proportion of foreign residents (12.3%)*⁴

*¹ In May 2014, a private panel of experts, the Japan Policy Council, singled out Toshima as the only one of Tokyo’s 23 special wards with this status. However, in April 2024, a report from the Population Strategy Council confirmed Toshima was no longer at risk.

*² As of January 1, 2025

*³ According to the 2020 national census, 35.6% of Toshima’s elderly population live alone. This is the highest percentage among all cities and special wards in Japan.

*⁴ As of January 1, 2025, Toshima has the second-highest proportion of foreign residents among Tokyo’s 23 special wards, following Shinjuku.

► City Tree and Flower



City tree:
Somei-Yoshino Cherry



City flower: Azalea

► City Emblem and Logo

The emblem features a twelve-petal chrysanthemum on the outer ring. Inside it is a tortoiseshell pattern based on the traditional Tokyo crest, with six outward-pointing arms, and a character from “Toshima” placed at the center. This emblem was officially adopted on October 1, 1982, on the occasion of the 50th anniversary of the City’s founding.



Emblem

The logo incorporates curved lines that form the blossom of the Somei-Yoshino cherry tree—Toshima’s official tree. These lines represent a bridge, symbolizing connection between people and continuity from past to future. It reflects the hope that the design will become a symbol of “Hometown Toshima,” a place the residents can be proud of.

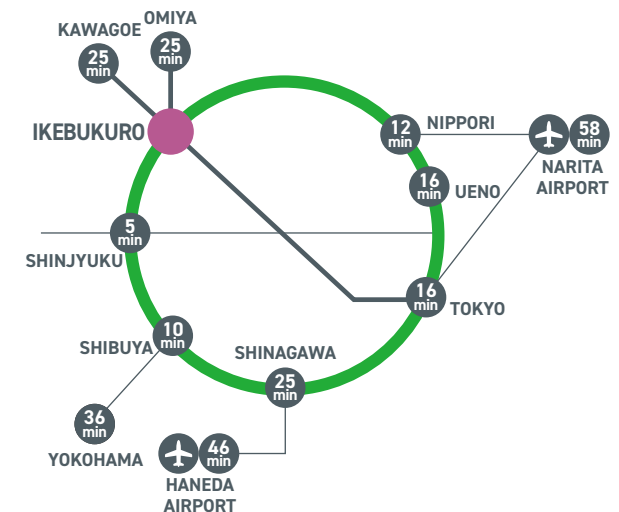


Logo

The proposed design, submitted by the committee for the Toshima City 80th anniversary project based on the results of a resident survey, was approved at the first regular session of the City Assembly in 2013.

📍 Access

Ikebukuro Station serves over 2 million passengers per day, making it a major terminal station. It offers excellent access not only to key areas within Tokyo, but also to both Narita and Haneda Airports in about an hour, and to the major cities of neighboring prefectures like Yokohama and Omiya in around 30 minutes, making convenience one of its defining features.



Help Shape the Future of Toshima with Your Opinion

Toshima City values the opinions of its residents as we work to become a “city of dreams” —a place people want to live, keep living, and come to visit. We welcome any and all input, whether it’s something you wish the City would do, a challenge you’re facing, or a desire to get involved in local activities or meetings. Please feel free to share what you’re thinking. Your feedback will be taken seriously and used to help improve the City administration.



Opinions and requests for City administration

You can submit your opinions or requests about City administration.



Children's voices

Children can send their opinions to the City Office.



Public comments

We solicit public feedback in advance when making important policy decisions for the City.



Meetings accessible to the public

You can access meetings and materials related to policy formation.



Open assembly

You are welcome to attend main assembly sessions in person or watch them online via livestream.