

To foreign residents of Toshima City

# Rules for Pet Dogs and Cats



There are various rules in Japan for keeping dogs and cats as pets. Please read the following and obey the rules.

## Dogs



**You must register your dog** (Register using either method A or B.)

### 【A】 Microchipped dogs

Register through your  
smartphone  
¥400



Only microchips issued in Japan  
are acceptable.

MoE registration  
website

### 【B】 No microchip

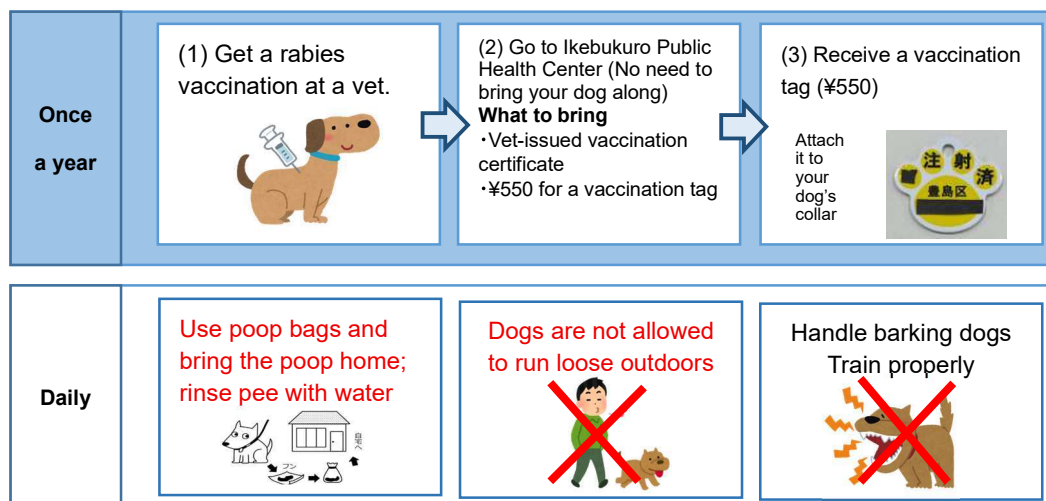
Register at Ikebukuro Public  
Health Center  
¥3,000



Receive a dog tag and attach it  
to your dog's collar.

If you move out of Toshima City, you must reregister with your new municipality.

## Daily life rules for pet dogs



When walking your dog:  
• Vaccination tag must be  
on collar  
• Leashes are required  
• Bring poop bags and  
water to rinse the pee



## Cats



Cats do not have to be registered.

### Daily life rules for cats

- (1) Keep your cat indoors.
- (2) Attach a name tag to your cat's collar and have your pet microchipped at a vet.
- (3) Cats are very fertile. Have yours spayed or neutered if you do not wish to have kittens.



To foreign residents of Toshima City

# Disaster Preparedness Measures for Pets



Japan is prone to natural disasters such as earthquakes and typhoons.  
Please read the following to prepare for natural disasters.

## Preparations before a disaster strikes



### Confirm your evacuation plan

- Make sure you know the road to the designated evacuation center
- Make arrangements with relatives and friends about evacuating to their house with your pets
- Have options of places that can temporarily keep your pets

### Preparations for your pets

- Proper health management, such as vaccinations
- Attach name tags and have them microchipped
- Train them (make sure they can be transported in travel cages)

### Prepare an emergency pet supply bag

- Food, water, etc., sufficient for five to seven days
- Any medication that your pets usually take
- Hygiene products such as pee pads
- Cages and the like for use at the evacuation site

## An earthquake strikes! What will you and your pets do?

What if my house is damaged?



(1) Is it safe to stay in your home?

No

Stay at home with your pets.

(2) You can evacuate to the house of a friend, relative or the like with your pets.

No

Bring your emergency pet supply bag and evacuate with your pets.

(3) A friend or the like can take care of your pets temporarily.

No

Hand your pets and emergency pet supply bag to that person. Then go to the evacuation center.

Bring the emergency pet supply bag and **evacuate to the designated evacuation center with your pets.**



### 【Evacuation Centers】

Elementary school and other facilities in the city are converted to shelters that you can evacuate to when a large-scale disaster occurs.

You can visit the center to receive food and other supplies even if you remain at home (at-home evacuation). (Note: Evacuation centers do not have pet supplies.)

Pets and humans are kept in different places at evacuation centers.

We ask that pet owners cooperate by also taking care of other pets brought to the evacuation center.

Note: Evacuation centers do not accept reptiles and the like. Please make arrangements about where to leave these and other exotic pets in advance.)

### 【Inquiries】

About pets, rabies vaccinations, etc.・・・Life and Public Health Section, Ikebukuro Public Health Center, 03-3987-4175 (4-42-16 Higashi-Ikebukuro, Toshima City)

About evacuation centers・・・・・・Disaster Prevention and Crisis Management Section, 03-4566-2572