

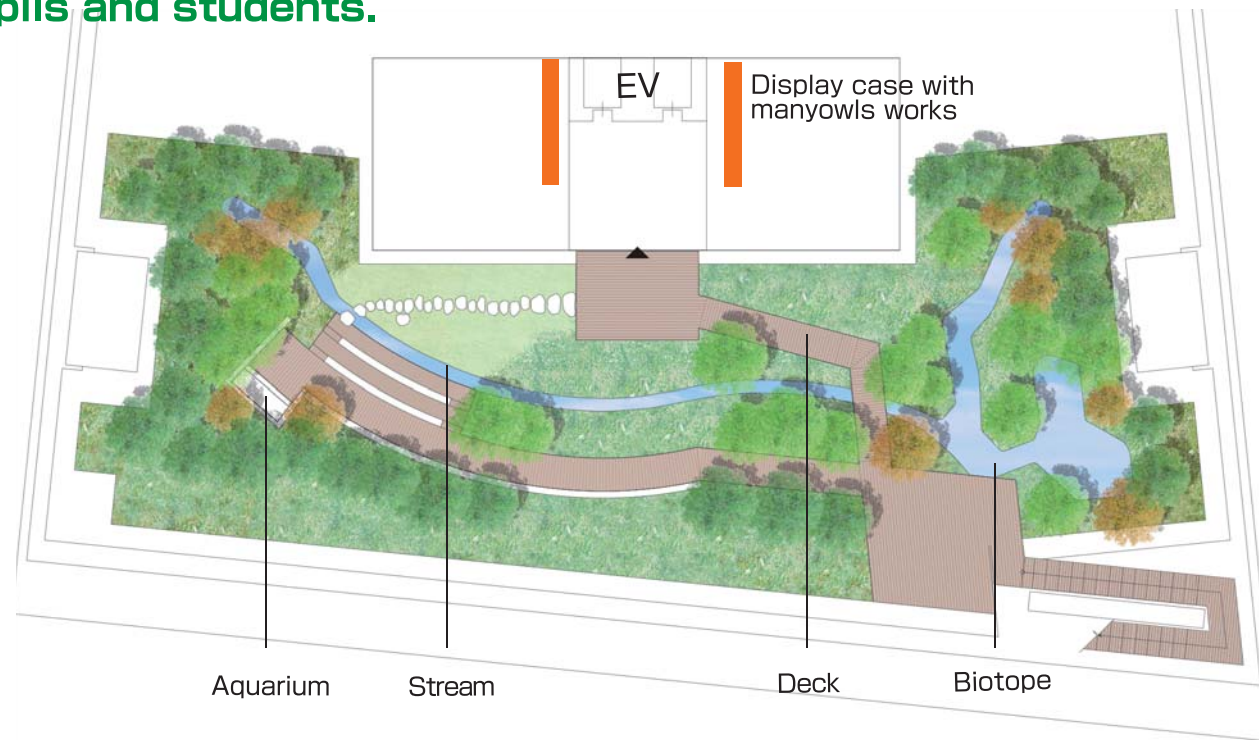
# 10F Toshima Forest

Will be utilized for ecology education of pupils and students.

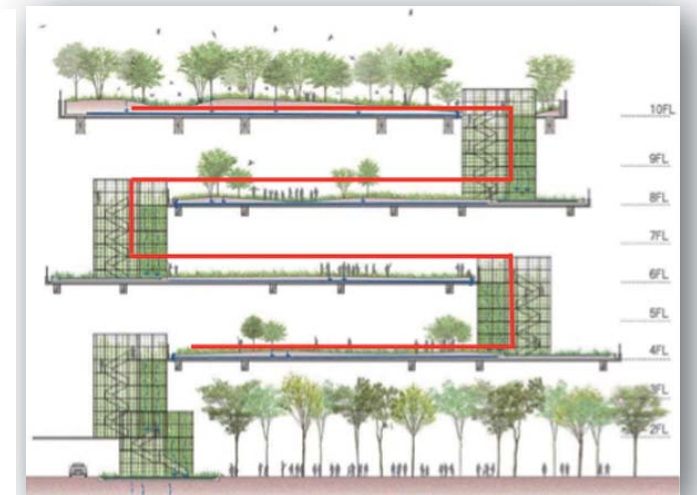
Completed on the 10th floor is "Toshima Forest", a re-creation of nature of former Toshima city. It will be a space where the citizens of Toshima city can rest while studying natural system, such as Toshima city's vegetation and ecology. The Toshima Forest is linked to the "Green Terrace" on the fourth, sixth and eighth floors by use of the external staircase, thus a tour-for-study route for feeling ecology will be open.



▲"Toshima Forest" roof garden.



▲Plain figure of Toshima Forest



▲Image of tour-for-study route.

## Green Terrace 4F 6F 8F



At the south side green terraces of the 4th, 6th and 8th floors you can enjoy greenery.

## Ecology education program.

The school board of Toshima city is planning various ecological education programs for pupils and students in corporation with the "Toshima Forest", such as "Going home of Japanese killifish" and "Let's breed a rescued dragonfly larva for a dragonfly!", etc.

