

Tree like New City Office leads “Environmental Measures”

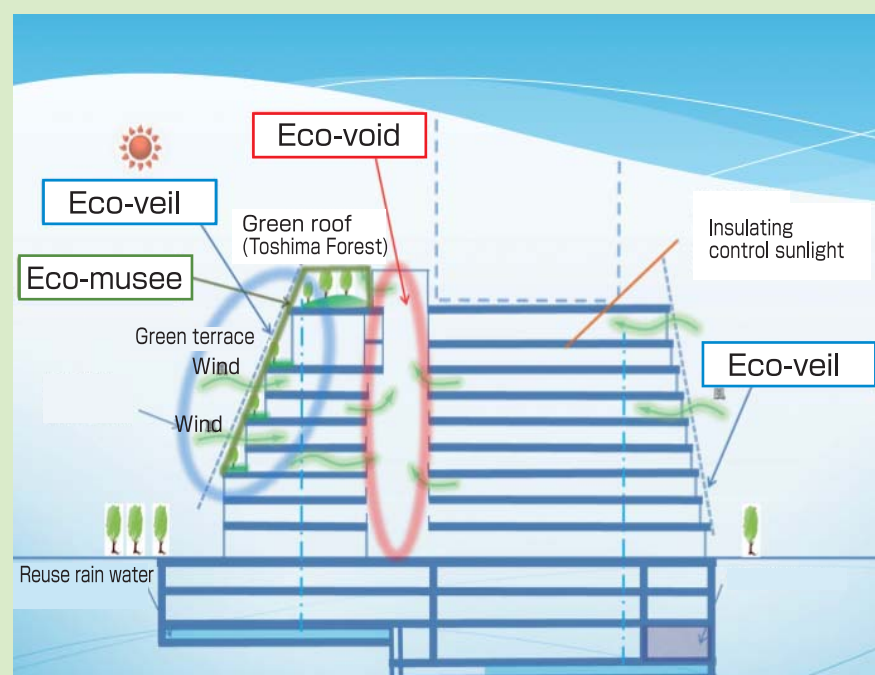
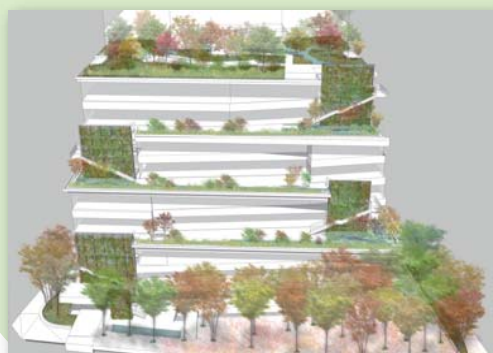
Carbon dioxide emissions will be declined by 45%

By introducing the latest eco-technology, we have developed an ecological city office which will be one of the models for environmental measures in our Country. Architects for the city office told on the environmental measures as under

We aimed to create an “ecological city office leading environmental measures” as a symbol of Toshima City’s slogan-- “Creating an Eco-City” . While creating the lush green environment for citizens to enjoy, we aggressively adopted ecological technologies such as the solar electricity generation system, natural lighting system, eco-lighting and rain-water circulation system, including an introduction of the district air-conditioning system. As a result, the emission of carbon dioxide by the city office will be reduced by 45% or more compared with the former building. NIHON SEKKEI, INC. Masaharu Rokushika



Appearance of “Eco-Musee” in autumn



Eco-void : 1st fl.~9th fl. Open ceiling space



Eco-veil is composed of 741 solar electricity generation panels for city office with maximum power of 57kw., and green panels, etc.



We engaged in the promotion of our plans together with the wisdom of the design team. From left to right; Mayor of Yukio Takano, chief of the city, Mr. Kengo Kuma. Mr.Masaharu Rokushika. Mr.Tatsuya Hiraga.

The appearance of Eco-veil



We thought it’ s important to create a place for the coming generation to be able to nurse the excellent environment of Toshima city. The open space and the roof symbolizing the environment of the area are to be completed as “Toshima forest” and “Toshima Eco-musee” which should not only protect the environment and meteorological environment, but also preserve the precious ecosystem.

We would like these facilities to become a field for practices of citizens’ comfortable and healthy life, and by supporting daily efforts in the area and at home as a base for civic activities relating to disaster prevention, health and environment, also become places for citizens to rest and study while engaging with natures. Our wishes in the proposals are that a little action done by the “Toshima Eco-musee” could lead to big changes influencing the world in the future.

LANDSCAPE PLUS LTD. Tatsuya Hiraga

Nucleus of design for new city office : Eco-veil·Eco-void·Eco-musee



We planned a tree-like city office. The Eco-veil which covers the building appears to be leaves of a tree, and with multiple functions it will be a new symbol suitable for the new office. The panels composing the Eco-veil seem to dismantle the big building, which hence appears to be human sized parts, matching the town. The exterior design that matches variety of trees all along the Green Avenue which leads the city office to the Ikebukuro station will create a landscape continuous with the city.

On the terrace and roof in the Eco-musee which creates a green landscape of city together with Eco-veil, the re-created forest of Toshima will be a space that citizens can freely use. Also set in the city office is a big open ceiling space named Eco-void that enables natural lighting and ventilations. The new city office will become a starting point for the development of Toshima city which took into consideration of the environment and landscape of the city, as well as better services for citizens. It will function as a city office of environment, suitable for what a city office in the 21st century should be like.

KENGO KUMA